

GINEVRA



GINEVRA



Always consult www.augentilighting.it for
UPDATED TECHNICAL DATA



WALL

GINEVRA



APPLICATION



Strengthened by its resistance, Ginevra is a product characterized by a high quality of construction materials that guarantees its use outdoors. Ginevra is available in two versions: with exclusive light orientation downwards, or with light orientation in both directions, therefore both downwards and upwards. The LED system guarantees its luminous efficiency and allows for minimum energy consumption. Installable by fixing to the wall, Ginevra is a perfect combination of design and technical efficiency.

WALL

GINEVRA

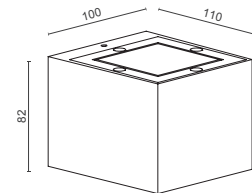
SPECIFICATIONS



Installation:
Wall


- The rated flux values refer to source LED at Ts65°C / ta25°C
- The Power/Flux in the table refer to maximum installable value
- Lower powers are available on request, only for version with built-in driver
- Single Emission version can be oriented both upwards and downwards


DIMENSIONS




LED SYSTEM WITH BUILT-IN DRIVER - Single Emission

COD.	Source Flux	Fixture Flux	CCT	CRI	Power	CL
9801W/WR3.V5	440 lm	195 lm	3000 K	80	4W - 220-240Vac 50/60Hz	I
9801W/NR3.V5	480 lm	210 lm	4000 K	80	4W - 220-240Vac 50/60Hz	I
9801W/WR3.V0	440 lm	310 lm	3000 K	80	4W - 220-240Vac 50/60Hz	I
9801W/NR3.V0	480 lm	335 lm	4000 K	80	4W - 220-240Vac 50/60Hz	I
9801W/WR3.V1	440 lm	130 lm	3000 K	80	4W - 220-240Vac 50/60Hz	I
9801W/NR3.V1	480 lm	145 lm	4000 K	80	4W - 220-240Vac 50/60Hz	I


 Beam
VS=Diffuse / Acid-frosted Glass
V0=60° / Transparent Glass
V1=10° / Transparent Glass


 Single Diffuse Emission
with beam control


 Not dimmable

LED SYSTEM WITH BUILT-IN DRIVER - Double Emission

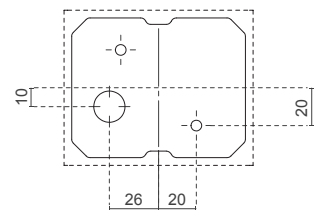
COD.	Source Flux	Fixture Flux	CCT	CRI	Power	CL
9800W/WR3.V5	880 lm	385 lm	3000 K	80	8W - 220-240Vac 50/60Hz	I
9800W/NR3.V5	960 lm	420 lm	4000 K	80	8W - 220-240Vac 50/60Hz	I
9800W/WR3.V2	880 lm	620 lm	3000 K	80	8W - 220-240Vac 50/60Hz	I
9800W/NR3.V2	960 lm	670 lm	4000 K	80	8W - 220-240Vac 50/60Hz	I
9800W/WR3.V3	880 lm	440 lm	3000 K	80	8W - 220-240Vac 50/60Hz	I
9800W/NR3.V3	960 lm	480 lm	4000 K	80	8W - 220-240Vac 50/60Hz	I
9800W/WR3.V4	880 lm	260 lm	3000 K	80	8W - 220-240Vac 50/60Hz	I
9800W/NR3.V4	960 lm	290 lm	4000 K	80	8W - 220-240Vac 50/60Hz	I

 Beam
VS=Diffuse / Acid-frosted Glass
V2=60°+60° / Transparent Glass
V3=10°+60° / Transparent Glass
V4=10°+10° / Transparent Glass

 Double Diffuse Emission
with beam control

 Not dimmable

ASSEMBLY



STANDARD COLOURS



WALL
GINEVRA

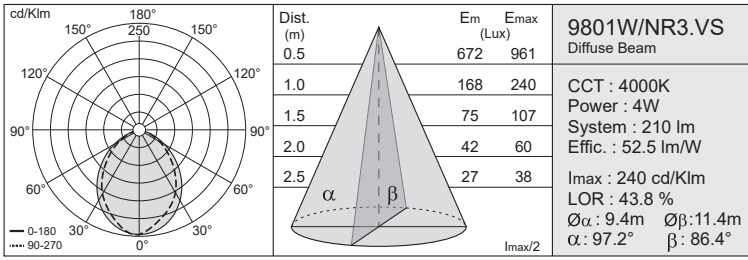


GINEVRA

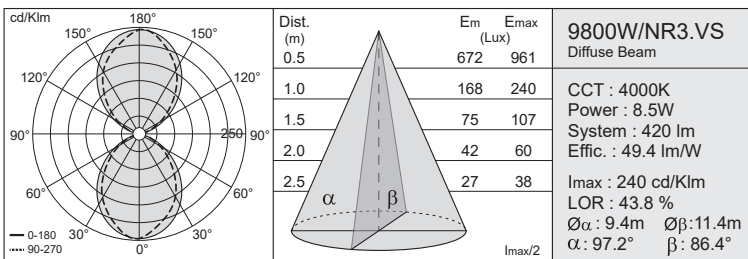
PHOTOMETRICS DATA



DIFFUSE



DIFFUSE



CHARACTERISTICS

- Optical system housing accessible during installation, with LED on wall-mounted anchor plate.
- Mounting system body/plate obtained through integrated hinge and locking grain.
- Lateral power cable entry with internal 3-way terminal block for non-pass-through wiring.
- Power cable allowed up to 1.5mm² three-pole with external sheath max. 11mm.
- LED/Driver maintenance by opening the optical compartment.
- Luminaire Conforms to EN60598-1 Standard and special requirements

MATERIALS

- Fixture/Base in Die-Cast Aluminium Alloy
- Borosilicate glass with internal acid-etched finish with transmission LT>60%.
- Molded gaskets in UV resist. Tx -40/+180°C.
- Integrated passive heat sink made of aluminium alloy
- Internal and external screws in A2 Stainless Steel
- IP65 Megol resin cable gland UV-Resist. GWT850°C
- Polyester powder coating, UV-stabilised with anti-corrosion treatment.