

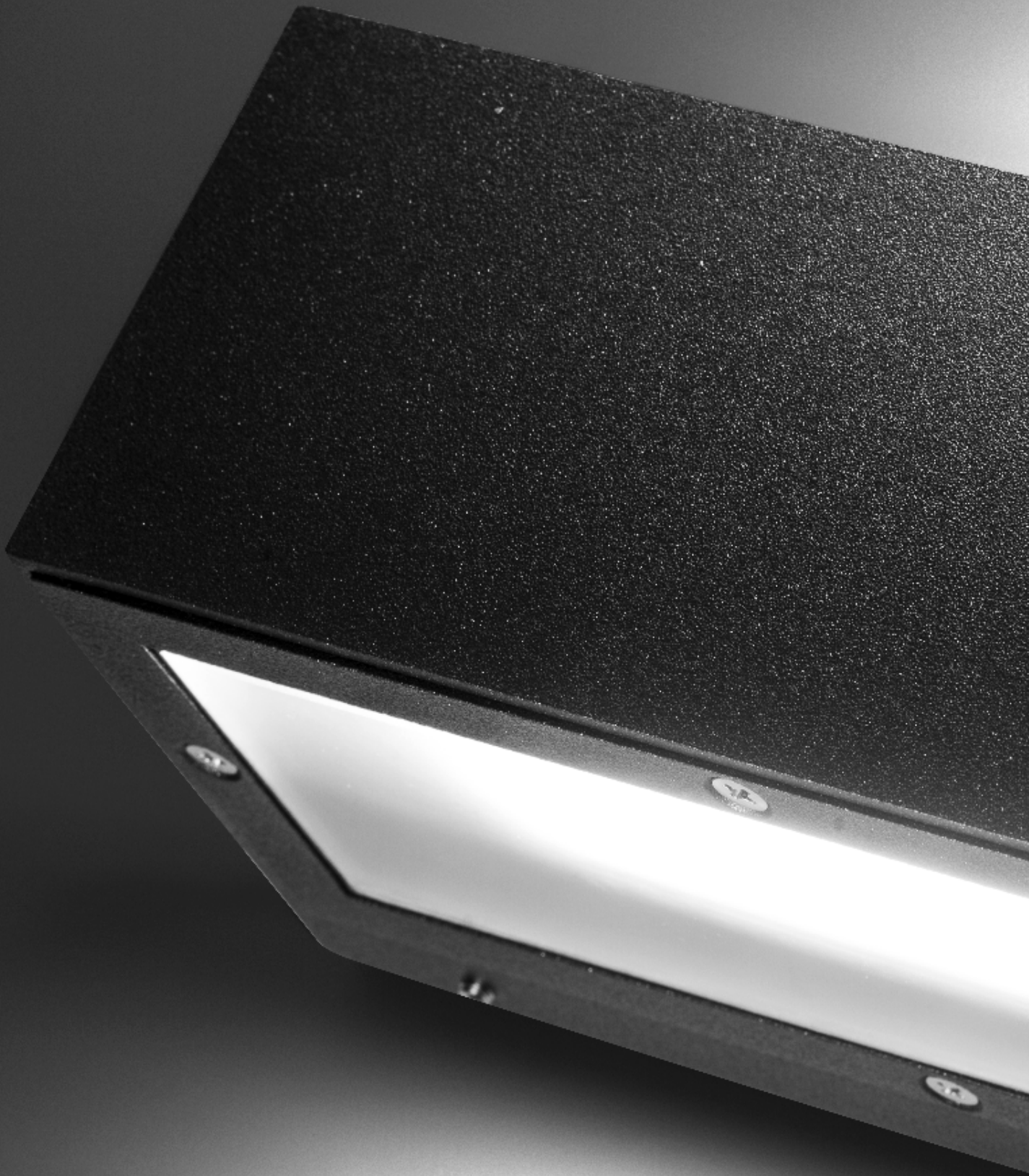
GIULIA



GIULIA



Always consult www.augentilighting.it for
UPDATED TECHNICAL DATA



WALL

GIULIA



APPLICATION



Single and double emission fixture with diffused light beam distribution. Suitable for grazing lighting of facades and curtain walls, it has a double mains voltage LED circuit for direct and indirect emission. Power supply with built-in driver with fixed output or Dali dimmable on request with extra charge.

CHARACTERISTICS

- Optical system housing accessible during installation, with LED on wall-mounted anchor plate.
- Mounting system body/plate obtained through integrated hinge and locking screw.
- Lateral power cable entry with internal 3-way terminal block for non feed-through wiring.
- Power cable allowed up to 1.5mm² tripolar with external sheath max 11mm.
- LED maintenance by opening the optical compartment.
- Luminaire Conforms to EN60598-1 Standard and special requirements

MATERIALS

- Fixture/Base in Die-Cast Aluminium Alloy
- Borosilicate glass with internal acid-etched finish with transmission LT>60%.
- Molded gaskets in UV resist. Tx -40/+180°C.
- Integrated passive heat sink made of aluminium alloy
- Internal and external screws in A2 Stainless Steel
- IP65 Megol resin cable gland UV-Resist. GWT850°C
- Polyester powder coating, UV-stabilised with anti-corrosion treatment.

WALL

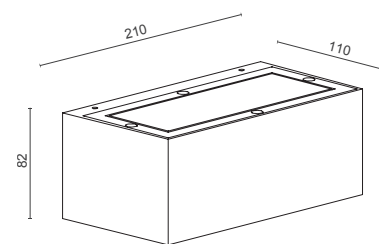
GIULIA

SPECIFICATIONS

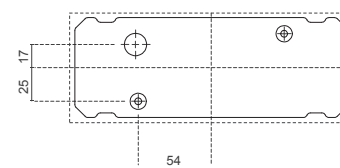


- The rated flux values refer to source LED at Ts85°C / ta25°C
- The Power/Flux in the table refer to maximum installable value
- Lower powers are available on request, only for version with built-in driver
- Dimmable system available on request only with built-in driver
- Single Emission version can be oriented both upwards and downwards

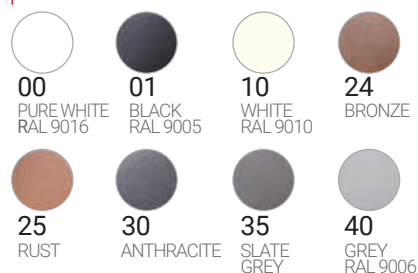
DIMENSIONS



ASSEMBLY



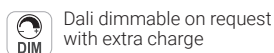
STANDARD COLOURS



LED SYSTEM WITH BUILT-IN DRIVER - Single Emission

REVIEW

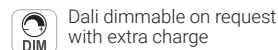
COD.	Source Flux	Fixture Flux	CCT	CRI	Power	CL
9901W/WC4.VS	991 lm	560 lm	3000 K	80	8W - 220-240Vac 50/60Hz	I
9901W/NC4.VS	1038 lm	588 lm	4000 K	80	8W - 220-240Vac 50/60Hz	I



LED SYSTEM WITH BUILT-IN DRIVER - Double Emission

REVIEW

COD.	Source Flux	Fixture Flux	CCT	CRI	Power	CL
9900W/WC4.VS	1982 lm	1090 lm	3000 K	80	14W - 220-240Vac 50/60Hz	I
9900W/NC4.VS	2076 lm	1145 lm	4000 K	80	14W - 220-240Vac 50/60Hz	I



PHOTOMETRICS DATA

