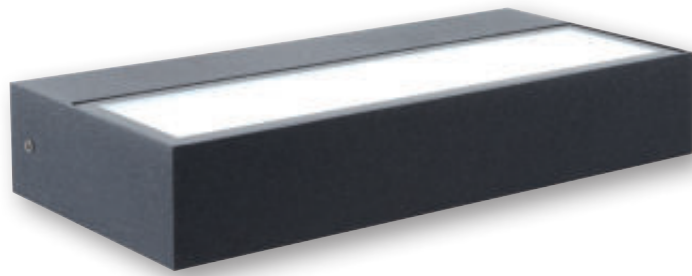


ISOTTA

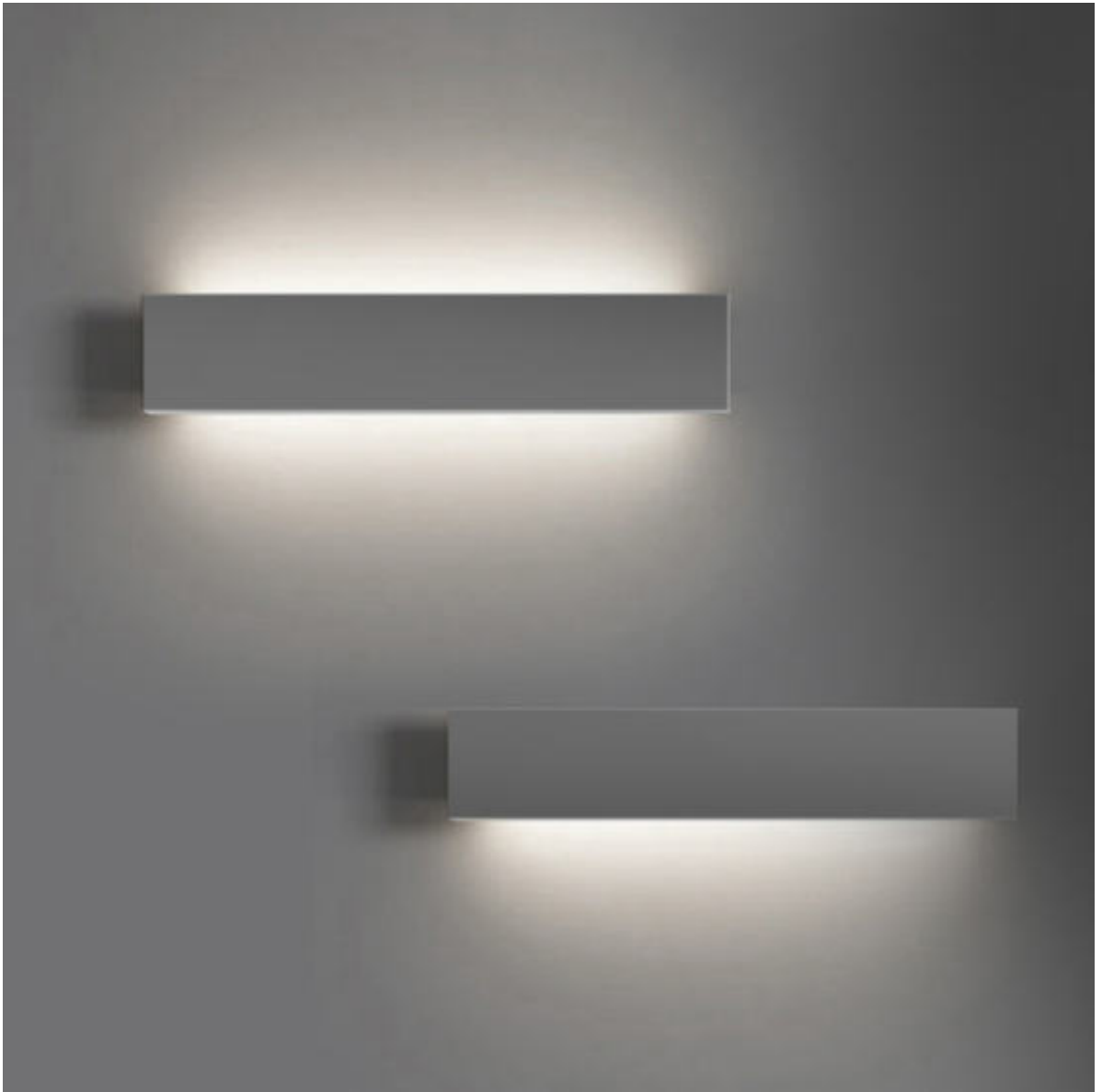


ISOTTA



Always consult www.augentilighting.it for
UPDATED TECHNICAL DATA





APPLICATION



LED wall light with a strong profile, Isotta is a perfect lamp for both indoors and outdoors. Entirely made of aluminum, it is enriched with two glass plates that shield the direct light of the LEDs and spread it homogeneously throughout the environment. Can be installed by wall fixing, Isotta is a perfect combination of innovative design and technical efficiency.

WALL

ISOTTA

SPECIFICATIONS

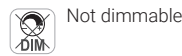


Installation:
Wall

- The rated flux values refer to source LED at Ts85°C / ta25°C
- The Power/Flux in the table refer to maximum installable value
- Lower powers are available on request, only for version with built-in driver
- Dimmable version not available

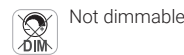
LED SYSTEM WITH BUILT-IN DRIVER - Single Emission

COD.	Source Flux	Fixture Flux	CCT	CRI	Power	CL
9850W/WR4.VS	2080 lm	450 lm	3000 K	80	17W - 220-240Vac 50/60Hz	I
9850W/NR4.VS	2180 lm	480 lm	4000 K	80	17W - 220-240Vac 50/60Hz	I

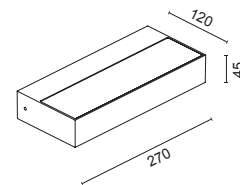


LED SYSTEM WITH BUILT-IN DRIVER - Double Emission

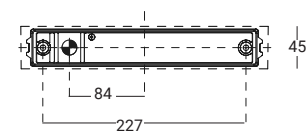
COD.	Source Flux	Fixture Flux	CCT	CRI	Power	CL
9851W/WR4.VS	2080 lm	900 lm	3000 K	80	17W - 220-240Vac 50/60Hz	I
9851W/NR4.VS	2180 lm	960 lm	4000 K	80	17W - 220-240Vac 50/60Hz	I



DIMENSIONS



ASSEMBLY



CHARACTERISTICS

- Optical compartment accessible during installation, with wall-mounting plate.
- Mounting system body/plate obtained through hidden locking grain.
- Lateral power cable input. Internal 3-ways terminal block for non feed-through wiring.
- Power cable allowed up to 1.5mm² with external sheath max. 10mm.
- Luminaire Conforms to EN60598-1 Standard and special requirements

MATERIALS

- Fixture/Base in Die-Cast Aluminium Alloy
- Borosilicate glass with internal acid-etched finish with transmission LT>60%.
- Glass gasket in neutral cross-linking silicone glue - Tx-50/+250°C UV resist.
- Integrated passive heat sink • Internal and external screws in A2 Stainless Steel
- IP65 Megol resin cable gland UV-Resist. GWT850°C
- Polyester powder coating, UV-stabilised with anti-corrosion treatment.

STANDARD COLOURS

