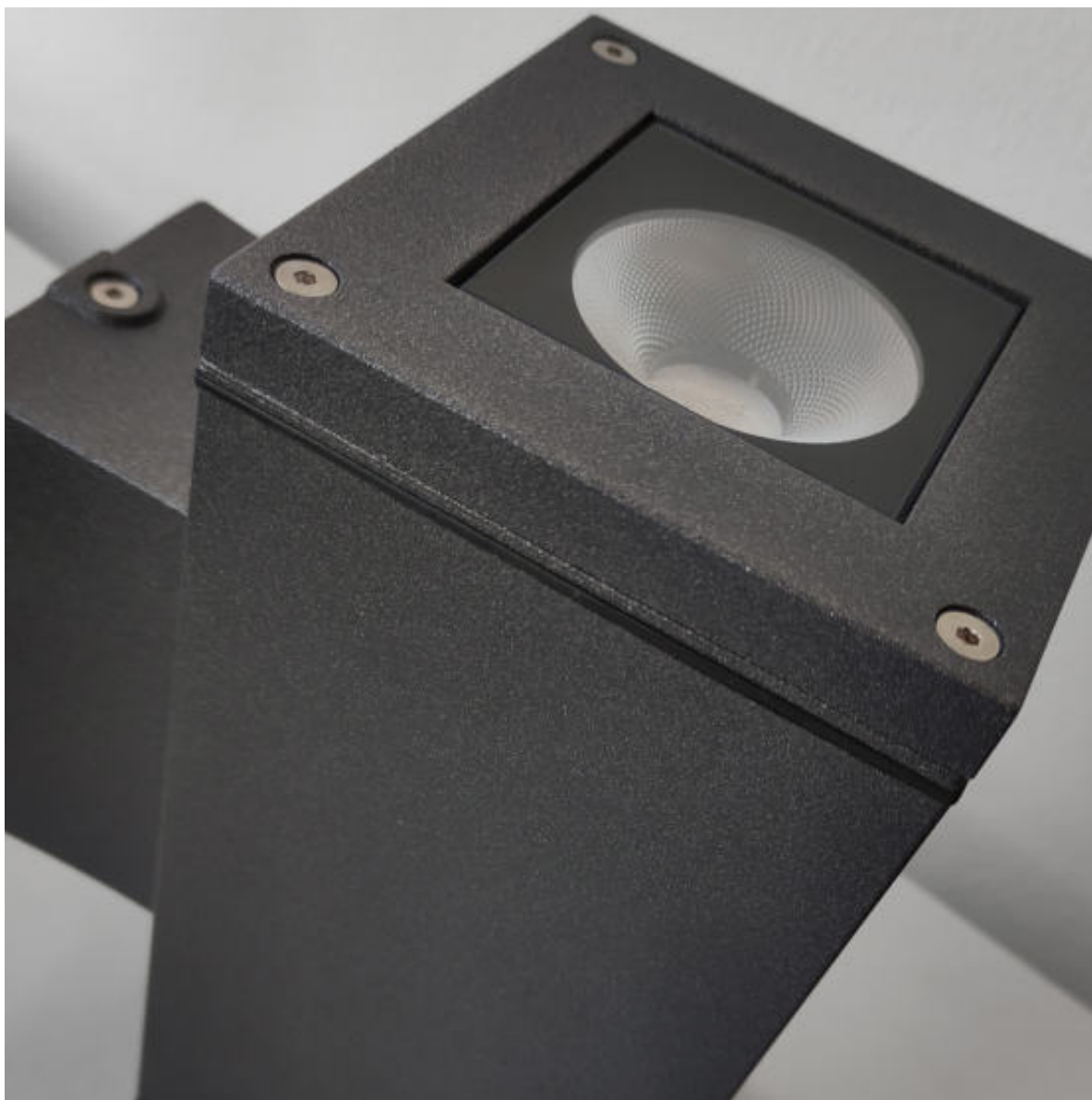


UP&DOWN-Q



APPLICATION



Wall-mounted luminaire configurable in single and double emission, ideal for grazing lighting of external facades. Up & Downd-Q is equipped with various secondary optics for controlling the luminous flux, which allow design flexibility through different combinations of direct and indirect emission. The fixture includes the use of LED sources with built-in driver with fixed output or Dali dimmable on request with extra charge.

WALL

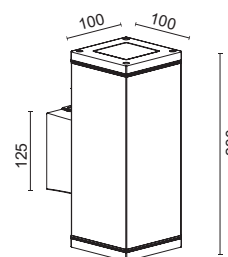
UP&DOWN-Q

SPECIFICATIONS

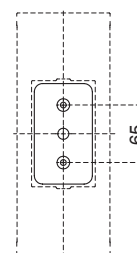


- The rated flux values refer to source LED at Ts85°C / ta25°C
- The Power/Flux in the table refer to maximum installable value
- Lower powers are available on request, only for version with built-in driver
- Dimmable system available on request only with built-in driver
- Single Emission version can be oriented both upwards and downwards

DIMENSIONS



ASSEMBLY



STANDARD COLOURS



LED SYSTEM WITH BUILT-IN DRIVER - Single Emission

REVIEW

COD.	Source Flux	Fixture Flux	CCT	CRI	Power	CL
9812W/WC0.XX	1359 lm	1239 lm	3000 K	80	14W - 220-240Vac 50/60Hz	I
9812W/NC0.XX	1414 lm	1288 lm	4000 K	80	14W - 220-240Vac 50/60Hz	I

Beam XX :
XX=NB (Flood 10°)
XX=MB (Flood 26°)
XX=WB (Wide Flood 56°)

Single Emission
Clear Glass

Dali dimmable on request
with extra charge

LED SYSTEM WITH BUILT-IN DRIVER - Double Emission

REVIEW

COD.	Source Flux	Fixture Flux	CCT	CRI	Power	CL
9810W/WC0.XX	2718 lm	2478 lm	3000 K	80	28W - 220-240Vac 50/60Hz	I
9810W/NC0.XX	2828 lm	2576 lm	4000 K	80	28W - 220-240Vac 50/60Hz	I

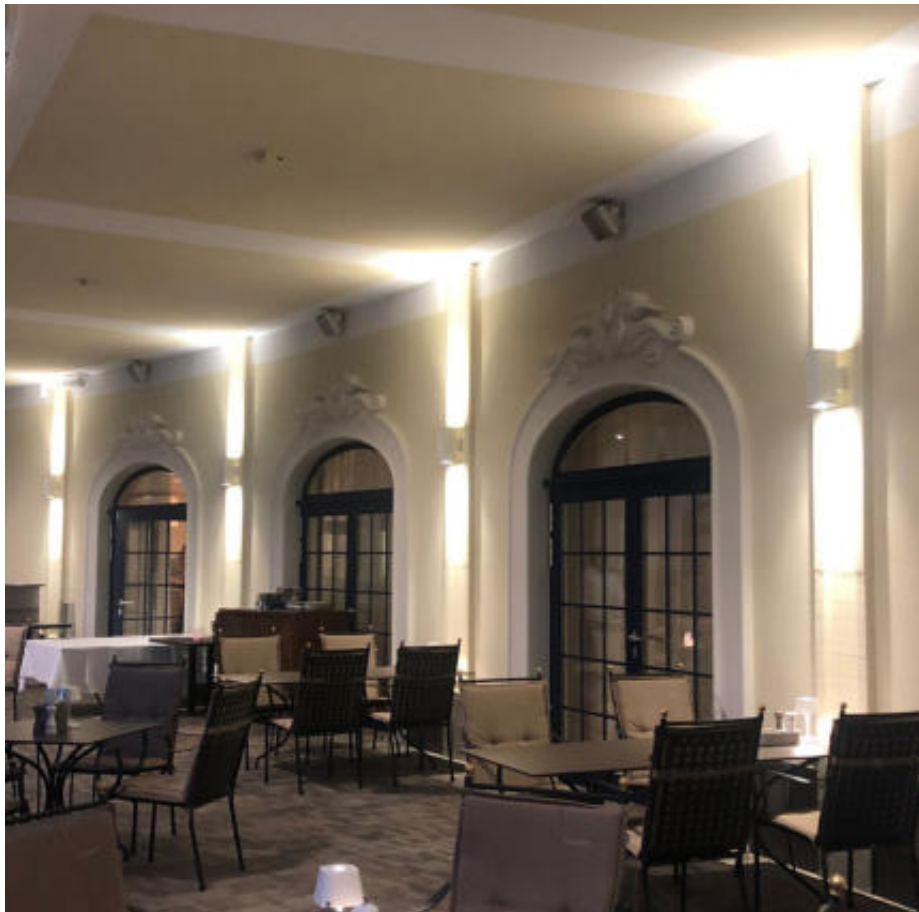
Beam XX :
XX=NB (Flood 10°+10°)
XX=MB (Flood 26°+26°)
XX=WB (Wide Flood 56°+56°)
XX=NW (Double Flood 10°+56°)

Double Emission
Clear Glass

Dali dimmable on request
with extra charge

WALL

UP&DOWN-Q



WALL

UP&DOWN-Q

CHARACTERISTICS

- Wall system with base equipped with power supply terminal separated from the optical compartment.
- Independent Optic/driver housing not accessible during installation
- LED/Driver maintenance by opening the optical compartment (4 screws).
- Fixed or Dali dimmable system for monochromatics LEDs.
- Luminaire Conforms to EN60598-1 Standard and special requirements

MATERIALS

- Sub-bearing base/Base in Die-Cast Aluminium Alloy
- Body in extrusion aluminium alloy.
- Float glass extra clear th=6mm - LTF transmission > 90%.
- Seals in EDPM closed cell rubber, UV- resist. Tx -40/+150°C.
- Passive heat sink in extrusion aluminium alloy.
- Internal and external screws in A2 Stainless Steel
- Polyester powder coating, UV-stabilised with anti-corrosion treatment.

PHOTOMETRICS DATA

