

375F1  
PT



375F2  
PT



375F3  
PT



375F3  
X3



375F2  
X3



375F1  
X3



# MAXIMA ONE



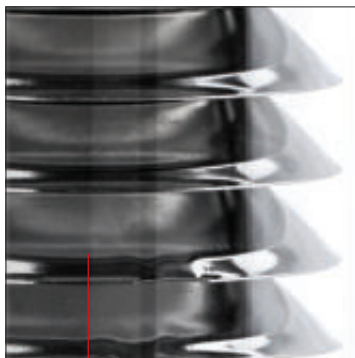
MAXIMA SMALL POLE  
Pag. 326



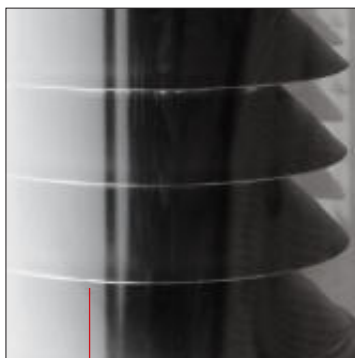
Always consult [www.augentilighting.it](http://www.augentilighting.it) for  
UPDATED TECHNICAL DATA



# MAXIMA ONE



DETAIL REFLECTOR PT  
Chromed steel louvres



DETAIL REFLECTOR X3  
Black painted ABS louvres with chromed steel edge detail

REFLECTOR  
PT



REFLECTOR  
X3



## APPLICATION



Maxima comes in two configurations: the first, suitable for residential installation, has a 370 mm lighting body and offers 4 different heights starting from 570 mm and reaching a maximum of 1600 mm. The second, also suitable for semi-urban and urban installation, has a 610 mm lighting body and heights that cover from 1200 mm to 3000 mm. Consisting of chromed louvre reflectors, in addition to guaranteeing a diffuse emission and limiting glare, it actively participates in designing the luminaire in its shape. It is also available with shielded louvres suitable for compliance with the Regulations on Light Pollution. The Waysne structure equipped with an anchor frame made with metal clamps necessary to guarantee its stability. The lamp body, firmly connected to the pole by means of a bayonet coupling, makes it easily removable during normal maintenance operations. Dali dimmable on request with extra charge.

# MAXIMA ONE

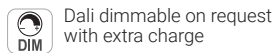
## SPECIFICATIONS



- The rated flux values refer to source LED at Ts85°C / ta25°C
- The Power/Flux in the table refer to maximum installable value
- Lower powers are available on request, only for version with built-in driver
- Dimmable system available on request only with built-in driver
- **Ground fixing system with plug INCLUDED**

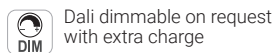
### LED SYSTEM WITH BUILT-IN DRIVER

COD.	Source Flux	Fixture Flux	CCT	CRI	Power	CL
375F1/WR8.PT	6342 lm	2618 lm	3000 K	80	44W- 220-240Vac 50/60Hz	I
375F1/NR8.PT	6640 lm	2713 lm	4000 K	80	44W- 220-240Vac 50/60Hz	I
375F2/WR8.PT	6342 lm	2618 lm	3000 K	80	44W- 220-240Vac 50/60Hz	I
375F2/NR8.PT	6640 lm	2713 lm	4000 K	80	44W- 220-240Vac 50/60Hz	I
375F3/WR8.PT	6342 lm	2618 lm	3000 K	80	44W- 220-240Vac 50/60Hz	I
375F3/NR8.PT	6640 lm	2713 lm	4000 K	80	44W- 220-240Vac 50/60Hz	I

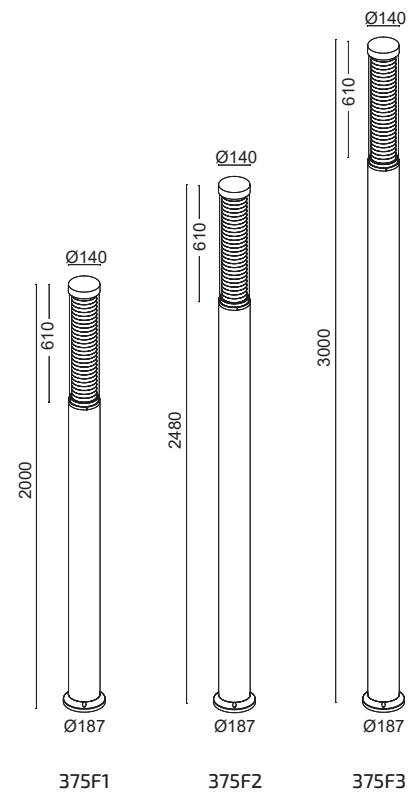


### LED SYSTEM WITH BUILT-IN DRIVER

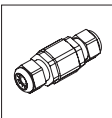
COD.	Source Flux	Fixture Flux	CCT	CRI	Power	CL
375F1/WR8.X3	6342 lm	1201 lm	3000 K	80	44W- 220-240Vac 50/60Hz	I
375F1/NR8.X3	6640 lm	1257 lm	4000 K	80	44W- 220-240Vac 50/60Hz	I
375F2/WR8.X3	6342 lm	1201 lm	3000 K	80	44W- 220-240Vac 50/60Hz	I
375F2/NR8.X3	6640 lm	1257 lm	4000 K	80	44W- 220-240Vac 50/60Hz	I
375F3/WR8.X3	6342 lm	1201 lm	3000 K	80	44W- 220-240Vac 50/60Hz	I
375F3/NR8.X3	6640 lm	1257 lm	4000 K	80	44W- 220-240Vac 50/60Hz	I



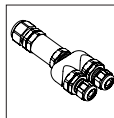
## DIMENSIONS



## ACCESSORIES

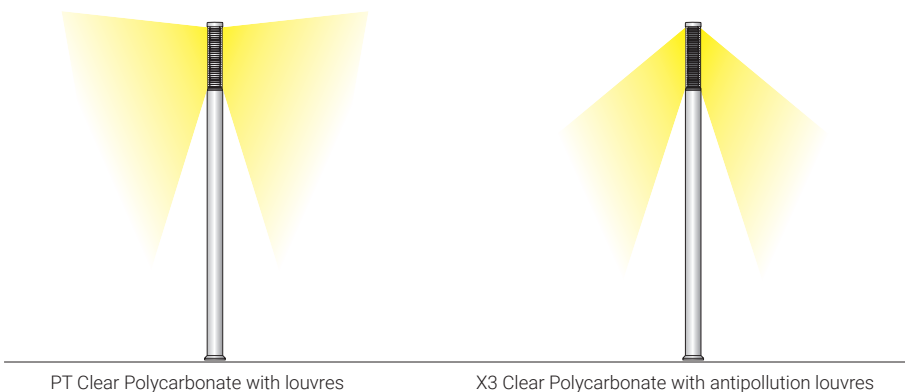


**MOR683P/2V**  
IP68 2ways/3poles connector.  
Maximum section 3x2.5mm



**MOR68Y3P/3V**  
IP68 3ways/3poles connector Y.  
Maximum section 3x2.5mm

## LIGHT DIFFUSION



## STANDARD COLOURS

