

MATRIX MINI

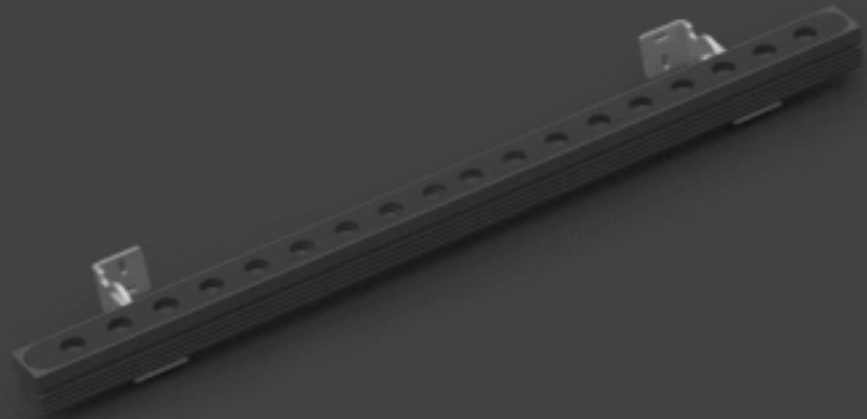
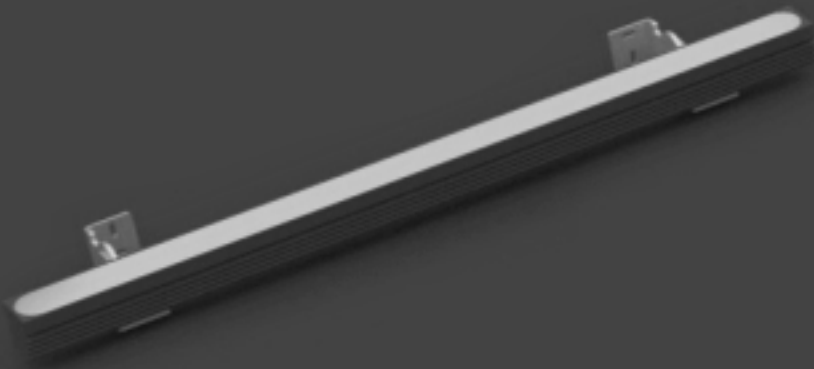
LINKED PRODUCTS



MATRIX MINI RECESSED
Pag. 224



Always consult www.augentighting.it for
UPDATED TECHNICAL DATA



MATRIX MINI

MATRIX MINI



APPLICATION



Linear adjustable fixture, suitable for wall, ceiling or floor installation as a stand-alone projector. Equipped with secondary optics for different light distributions, this version of Matrix is particularly suitable for grazing lighting on building facades, to enhance their material consistency, or to accentuate the architectural details of a historic building. Lamp with passive circuit, remote driver 24 V DC, therefore dimmable with all systems.

CHARACTERISTICS

- Adjustable luminaire on transversal plane with screw tightening / graduated ring nut.
- Supplied pre-wired with 50cm cable type 05RN-F 2x0.75
- Independent optical compartment not accessible during installation.
- LED maintenance can be carried out by disassembling the head (4 screws) and the support bracket.
- Driver maintenance can be carried out by replacing the resin box.
- Appliance Complies with EN60598-1 Standard and special requirements

MATERIALS

- Body in aluminum alloy for extrusion
- Extra-clear Float glass $s = 4\text{mm}$ with silk-screen printing - LT transmission > 90%.
- UV resist closed cell rubber gaskets. Tx -40 / + 150 ° C
- Glass / Driver gasket in neutral cross-linking silicone glue - Tx -50 / + 250 ° C UV resist.
- Passive heatsink in aluminum alloy.
- Internal and external screws in A2 stainless steel
- UV ray stabilized polyester powder coating with anti-corrosion treatment

MATRIX MINI

SPECIFICATIONS



Installation:
Wall/Ceiling/Ground

- The rated flux values refer to source LED at Ts85°C / ta25°C
- The Power/Flux in the table refer to maximum installable value
- Dimmable version available on request only with remote driver
- Supplied with 2x0.75mm² cable 300mm long
- **IP68 connector available on request**
- **24V remote driver to be ordered separately****

LED SYSTEM WITH REMOTE DRIVER 24Vdc

COD.	Source Flux	Fixture Flux	CCT	CRI	Power	CL	LED
2811P/WPRCXX	900 lm	785 lm	3000K	>80	8W - 24Vdc	III	18
2811P/NPRCXX	970 lm	840 lm	4000K	>80	8W - 24Vdc	III	18
2812P/WPRCXX	1350 lm	1180 lm	3000K	>80	12W - 24Vdc	III	27
2812P/NPRCXX	1450 lm	1260 lm	4000K	>80	12W - 24Vdc	III	27
2813P/WPRCXX	1800 lm	1574 lm	3000K	>80	16W - 24Vdc	III	36
2813P/NPRCXX	1940 lm	1678 lm	4000K	>80	16W - 24Vdc	III	36

Beam
XX=NB (Spot 20°)
XX=WB (Wide Flood 45°)
XX=OB (Oval 20°x40°)

Adjustable Direct Emission
Silk-Screen Clear Glass

Dimmable
DIM



LED SYSTEM WITH REMOTE DRIVER 24Vdc

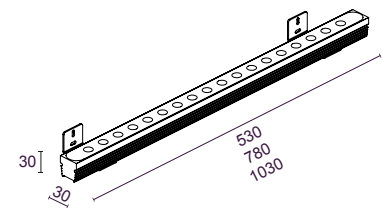
COD.	Source Flux	Fixture Flux	CCT	CRI	Power	CL	LED
2811P/WRRCVS	1130 lm	280 lm	3000 K	80	8W - 24Vdc	III	
2811P/NRRCVS	1220 lm	300 lm	4000 K	80	8W - 24Vdc	III	
2812P/WRRCVS	1700 lm	420 lm	3000 K	80	12W - 24Vdc	III	
2812P/NRRCVS	1830 lm	450 lm	4000 K	80	12W - 24Vdc	III	
2813P/WRRCVS	2260 lm	560 lm	3000 K	80	16W - 24Vdc	III	
2813P/NRRCVS	2440 lm	600 lm	4000 K	80	16W - 24Vdc	III	

Beam
>100°

Diffuse Emission orientable
Opal Glass

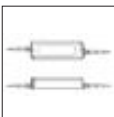
Dimmable
DIM

DIMENSIONS

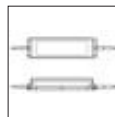


CODE	L
2811P	530mm
2812P	780mm
2813P	1030mm

**** ELECTRONIC ACCESSORIES**
24V REMOTE DRIVER TO BE ORDERED SEPARATELY



E.TRA.577
Power supply 24Vdc / 25W IP67
Not dimmable



E.TRA.579
Power supply 24Vdc / 100W IP67
Not dimmable

QUANTITY OF CONNECTABLE LAMPS FOR DRIVER

2811P from 1 to 2 lamps

2812P 1 lamp

2813P 1 lamp

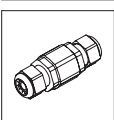
QUANTITY OF CONNECTABLE LAMPS FOR DRIVER

2811P from 3 to 10 lamps

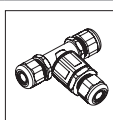
2812P from 2 to 7 lamps

2813P from 2 to 5 lamps

ACCESSORIES



MOR683P/2V
IP68 2ways/3poles connector.
Maximum section 3x2.5mm



MOR683P/3V
IP68 3ways/3poles branch connector. Maximum section 3x2.5mm

STANDARD COLOURS

